

Growth and functional trait responses of *Berberis lutea* to Super El Niño events in Peruvian altimontane shrublands

Supplementary Material

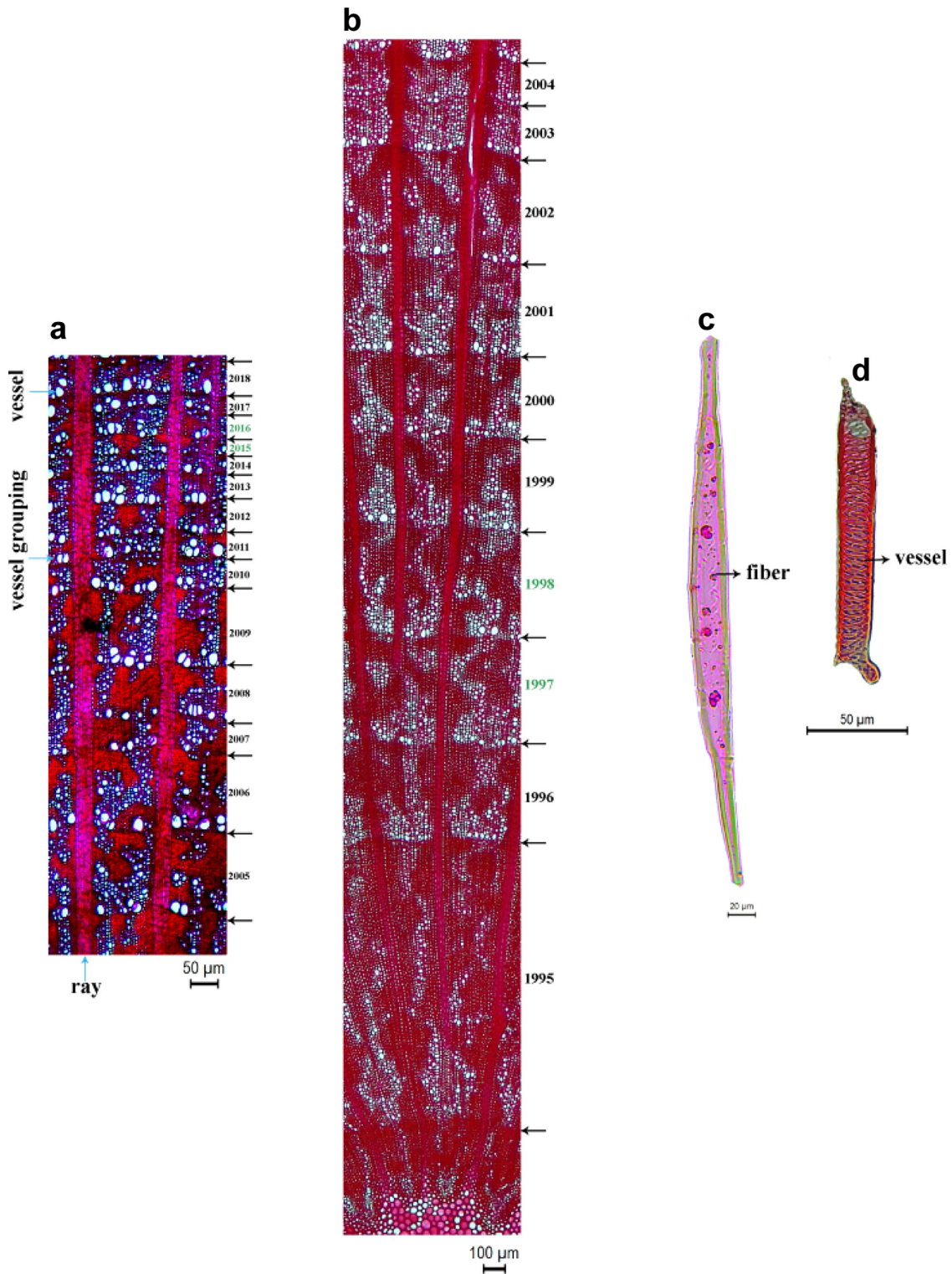


Fig. S1. Functional wood anatomical traits of *B. lutea*. (a–b) Transverse sections showing the identification of Super El Niño event rings. Dashed lines delimit annual rings corresponding to the 1997–1998 and 2015–2016 Super El Niño events. (c–d) Dissociated wood elements: (c) vessels showing typical size and arrangement, and (d) fibers illustrating cell wall thickness and lumen diameter